

# Our Route:

EUROPEAN  
INDUSTRIAL  
HERITAGE  
ROUTE

Day 1

The Railroad to Coal

Üzülmez Geo-Culture Valley

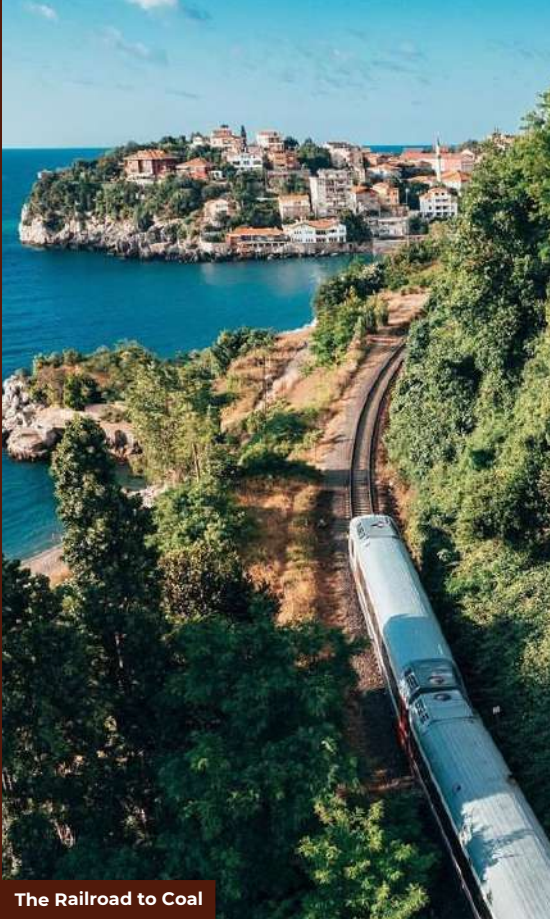
Historical Coke Factory and  
Chimney

Karaelmas Mine Martyrs Museum

Mining Museum and Coal Training Quarry

2 Day

Center



The Railroad to Coal



Üzülmez Geo-Culture Valley



Historical Coke Factory and Chimney



Karaelmas Mine Martyrs Museum



Mining Museum and Coal Training Quarry

## Day 2



Fener Neighborhood

Fener Neighborhood

Varagel Tunnel

Zonguldak Port

Sharjumen Rapid Pier



Varagel Tunnel



Zonguldak Port



Sharjumen Rapid Pier

Center